

# RyCE Registration Data Access Protocol

---

*Post-GDPR Protocol for Registry Operators*



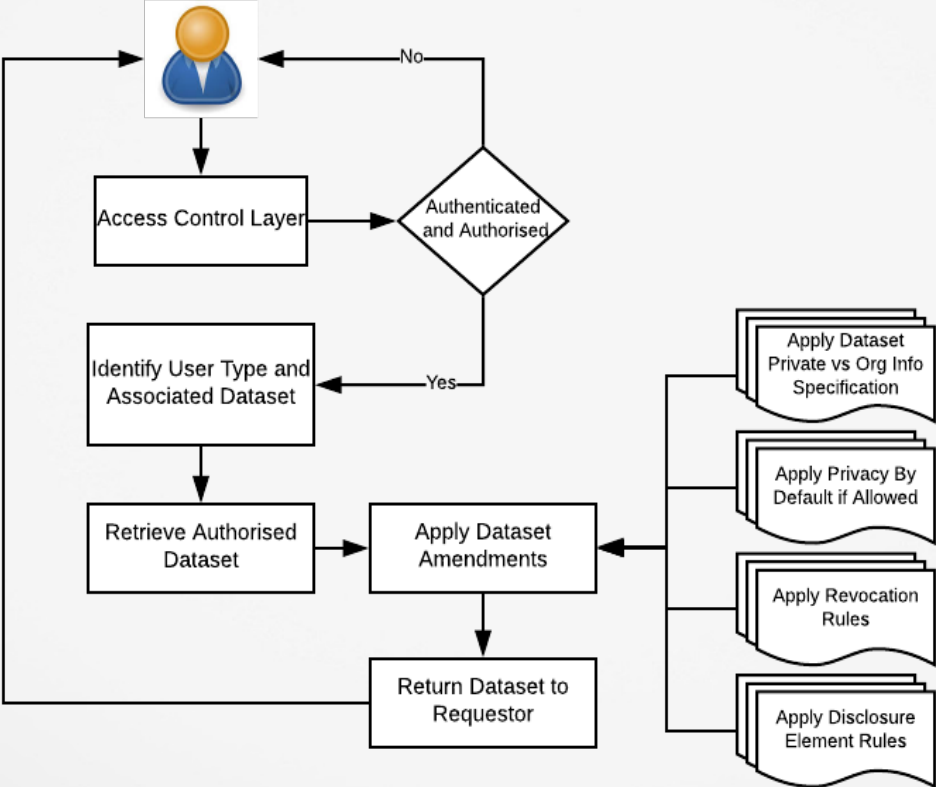
# Why RDAP

- EU General Data Protection Regulation
- Addressed Austrian Registry Data Access Requirements
- Next-Generation Technology
- Credentialing and Access Control
- Multi-tier Data Access
- Easier Auditing
- ICANN Offered Pilot Program

# Policy Development

- Identify available data
  - Registry generated data
  - Registrar provided data
- Identify Users and Purposes for data
- Creation of Data Sets
  - Private Data
  - Public Data
- Mapping data sets to users and purposes
- Mapping access controls to users and purposes

# Process Workflow



# Technical Implementation

- Current ICANN WHOIS model adoption
  - Domain query
  - Registrar/Contact query
  - Nameserver query
- EPP Contact Disclose element incorporation
- Basic HTTP authentication (username and password)
  - <https://demo:demo12345@rdap.ryce-rsp.com/rdap/domain/nic.wien/>
- Extended to allow authInfo for domain transfers
  - <https://rdap.ryce-rsp.com/rdap/domain/nic.wien/?authinfo=test>
- Currently uses Live Registry Data

# Lessons Learned

- Technically almost everything is possible
- Policy is key, local and international
- One size does not fit all
- No global standard for credentialing, centralised authentication, certificate based authentication
- Constant development, but slow due to no real-world uptake or examples to learn from
- Data unavailability in a world of privacy/proxy

# Future Implementation

- WHOIS/RDAP interpreter
- Federated Access (OAuth)
- Expand user category and data access
- Implement credentialing mechanism
- Create front-end user interface
- Refine data access and user categories based on GDPR experiences

## Contact Us and Feedback

- Website: <https://rdap.ryce-rsp.com/>
- Email: [rdap-feedback@dns.business](mailto:rdap-feedback@dns.business)

## Special Thanks

- ICANN
- Verisign
- Viagenie
- RDAP Pilot Working Group Members





**Questions?**